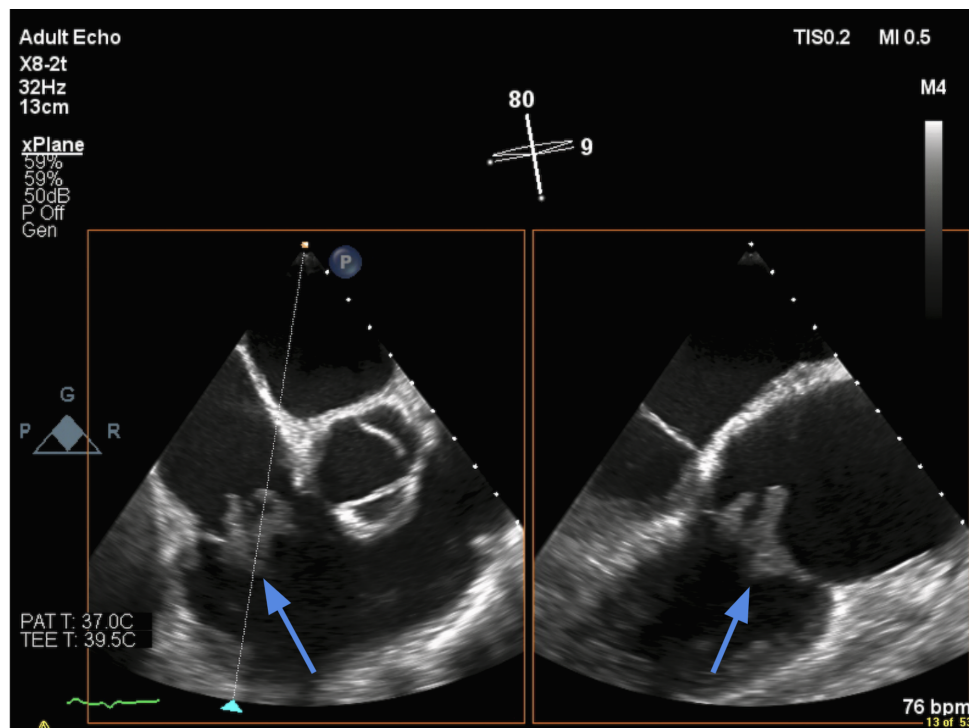


An Unusual Case of Tricuspid Valve Infective Endocarditis Caused by *Erysipelothrix Rhusiopathiae*

Pranav Karambelkar, Chaitanya Rojulpote, Austin J. Borja,
Cathrine Youngs, **Abhijit Bhattaru**

Cureus| May 3rd, 2020

Erysipelothrix rhusiopathiae is an omnipresent commensal in the environment, studied for over a century. It is a zoonotic pathogen known to cause infections in animals and humans. Cases of *Erysipelothrix rhusiopathiae* in humans have been classified into three distinct entities: localized skin infections, diffuse skin infections, and systemic organ involvement. This particular pathogen is an uncommon cause of endocarditis, with an affinity for the aortic valve. We present a case of *Erysipelothrix rhusiopathiae* in a patient with involvement of the tricuspid valve.



DOI:[10.7759/cureus.7942](https://doi.org/10.7759/cureus.7942) | Pubmed: [32499982](https://pubmed.ncbi.nlm.nih.gov/32499982/)